



## **25, 30, 35 METRE TOWERS**

Manufactured and Installed by George Stott and Company

In

**NAMIBIA**

For

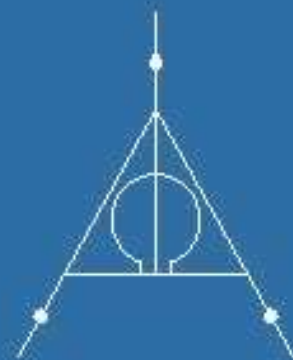
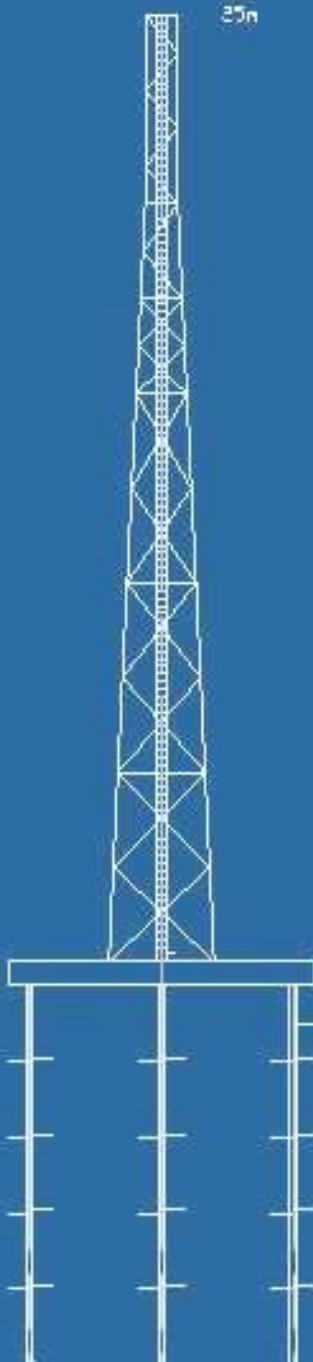
RNS (Radio Network Solutions)  
1467 Windjammer Street, Laser Park,

REVISIONS

ZONE	REV	DESCRIPTION	DATE	APPROVED
------	-----	-------------	------	----------

DESIGN PARAMETERS  
 WIND SPEED - 40m/s  
 WIND RETURN PERIOD  
 - 150 YRS  
 TERRAIN CATEGORY -  
 2  
 SITE ALTITUDE -  
 1100M  
 ANTENNA LOADING  
 9 X PANEL ANTENNAE  
 3 X 600mm M/V  
 DISHES

TOWER MASS	
MAIN LEGS	
DIAGONALS	
HORIZONTALS	1200 kg
REDUNDANTS BRACING	kg
INTERNAL PLATFORM	173 kg
LADDER	330 kg
BASE PLATE	80 kg
HOLDING DOWN BOLTS & TEMPLATE	89 kg
BOLTS MAIN LEG	170 kg
BOLTS BRACING MEMBERS	100 kg
SPLICE PLATES	170
TOTAL	<u>2362</u>
GALVANIZING	<u>34.48</u>
GRAND TOTAL	<u>2456.48</u>



PLAN VIEW OF TOWER AND GRILLAGE



RADIO NETWORK SOLUTIONS

TITLE 25m 3 LEG PARALLEL TAPER LATTICE TOWER

DWG NO.

REV

SCALE

DATE 06-06-2006

SHEET

REVISIONS

ZONE	REV	DESCRIPTION	DATE	APPROVED
------	-----	-------------	------	----------

DESIGN PARAMETERS  
 WIND SPEED - 40m/s  
 WIND RETURN PERIOD  
 - 100 YRS  
 TERRAIN CATEGORY -  
 2  
 SITE ALTITUDE -  
 1100M  
 ANTENNA LOADING  
 9 X PANEL ANTENNAE  
 3 X 500mm M/W  
 DISHES

TOWER MASS	
MAIN LEGS	
DIAGONALS	
HORIZONTALS	2000 kg
REDUNDANTS BRACING	kg
INTERNAL PLATFORM	200 kg
LADDER	570 kg
BASE PLATE	105 kg
HOLDING DOWN BOLTS	95 kg
BOLTS MAIN LEG	185 kg
BOLTS BRACING MEMBERS	110 kg
SPLICE PLATES	205
TOTAL	<u>3470</u>
GALVANIZING	138.3
GRAND TOTAL	<u>3608.3</u>



PLAN VIEW OF TOWER AND GRILLAGE



RADIO NETWORK SOLUTIONS

TITLE 30m 3 LEG PARALLEL TAPER LATTICE TOWER

DWG NO. 002

REV

SCALE

DATE 06-06-2006

SHEET

REVISIONS

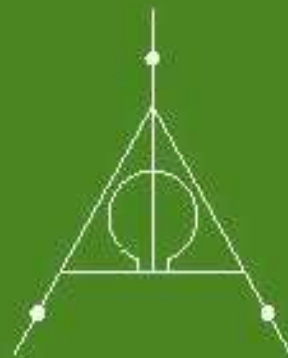
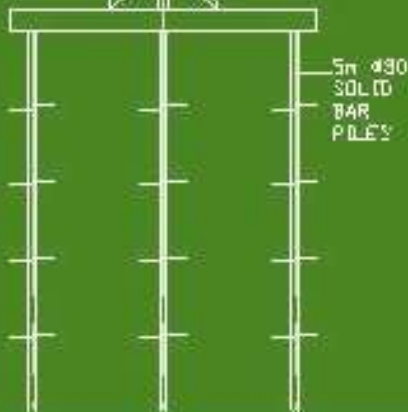
ZONE	REV	DESCRIPTION	DATE	APPROVED
------	-----	-------------	------	----------



TOWER MASS

MAIN LEGS DIAGONALS HORIZONTALS	2500 kg
REDUNDANTS BRACING	kg
INTERNAL PLATFORM	220 kg
LADDER	620 kg
BASE PLATE	115 kg
HOLDING DOWN BOLTS	105 kg
BOLTS MAIN LEG	200 kg
BOLTS BRACING MEMBERS	120 kg
SPLICE PLATES TOTAL	<u>215</u> <u>4095</u>
GALVANIZING	163.6
GRAND TOTAL	<u>4258.6</u>

DESIGN PARAMETERS  
 WIND SPEED - 40m/s  
 WIND RETURN PERIOD  
 - 150 YRS  
 TERRAIN CATEGORY -  
 2  
 SITE ALTITUDE -  
 100M  
 ANTENNA LOADING:  
 9 X PANEL ANTENNAE  
 3 X 600mm H/W  
 DISHES



PLAN VIEW OF TOWER AND  
GRILLAGE



RADIO NETWORK SOLUTIONS

TITLE 35m 3 LEG PARALLEL TAPER LATTICE TOWER

DWG NO: 003

REV

SCALE

DATE 06-06-2006

SHEET







# FACTORY

## PRE-ASSEMBLY, inspection & testing

